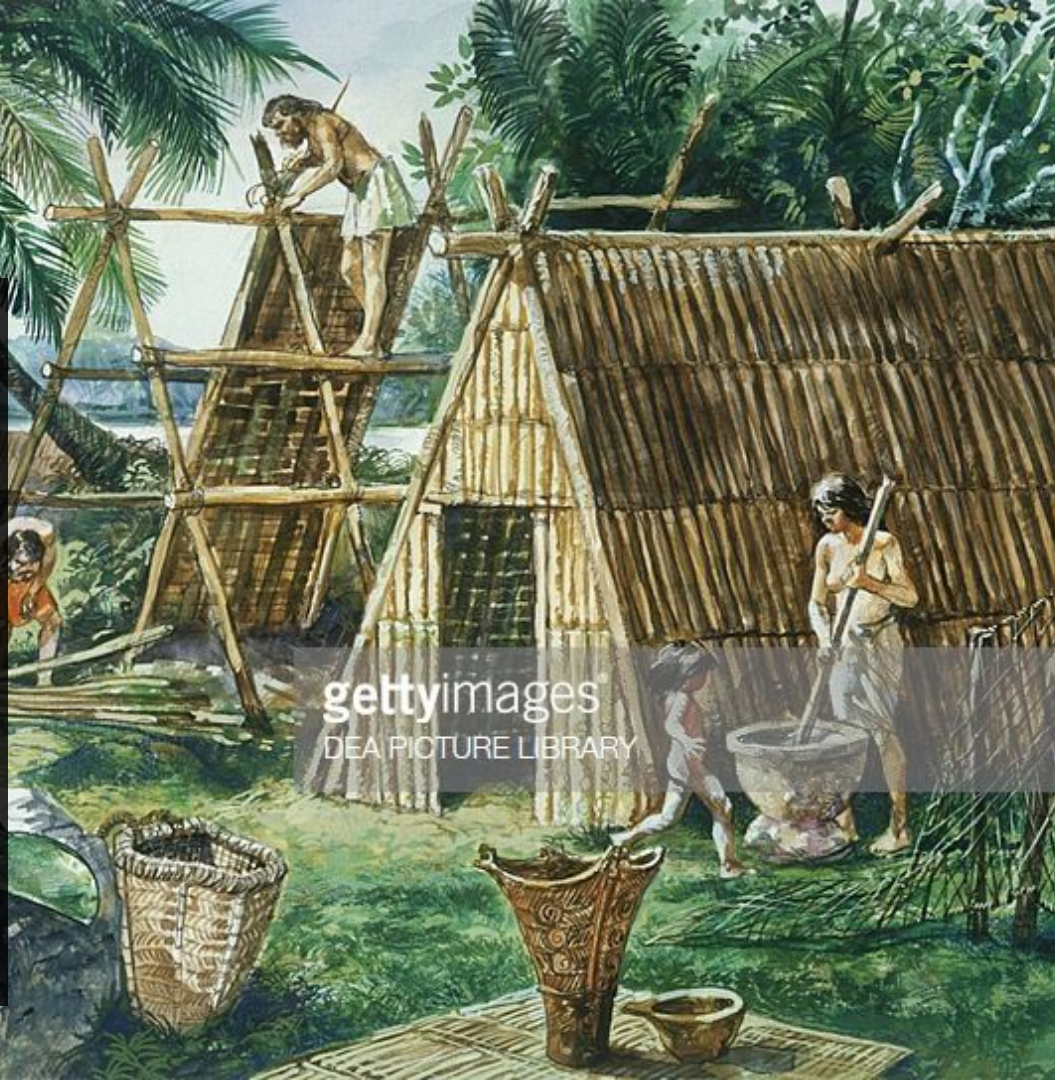


The Importance of Ancient Pottery

Tyrus Torres

Why learn about ancient pottery?

- Look into Lifestyle
- Learn about Technology
- Understand Art Style
- Interpret History



Jomon Pottery/Tools

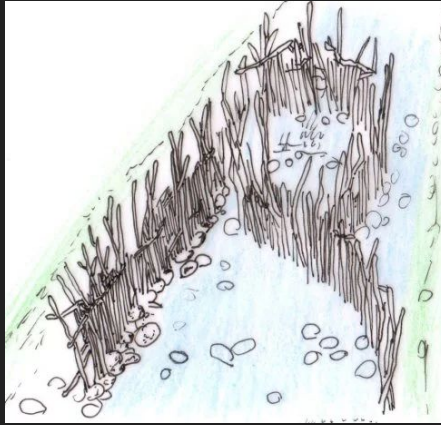
- Pottery
- Fishing tools
- Lifestyle





Pottery Timeline Transition to Sedentary Life

- Pre Jomon 14-8,000 BCE
 - Semi-Sedentary
 - Transferred from mainland
 - Linear Relief
 - Conical Shape
- Early Jomon 8-2,500 BCE
 - Cord Impression
 - Cooking vessels
 - Flat Bottoms
- Middle Jomon 2,5-1,500 BCE
 - Functional to Decorative
 - Sedentary Transition
 - Start of Dogu
- Late Jomon 1,5-100 BCE
 - Decorative
 - Ceremonial
 - Motifs
 - Korean Influence



Fishing Tools

- Harpoon Heads
- Fish Hooks
- Net Sinkers
- River Weirs
- Fish Traps
- Middens



Jomon Lifestyles

Significance of Sedentary Life

- Shift from a Mobile Lifestyle
 - Caused from environmental changes
- Food surplus & new technology
 - Food storage pits
 - Cooking tools
 - Fishing tools
- Settlement
 - Sunken-Earth Homes
 - Elevated food storage
- Ancestor Worship
 - Burial
 - Ceremonial Goods



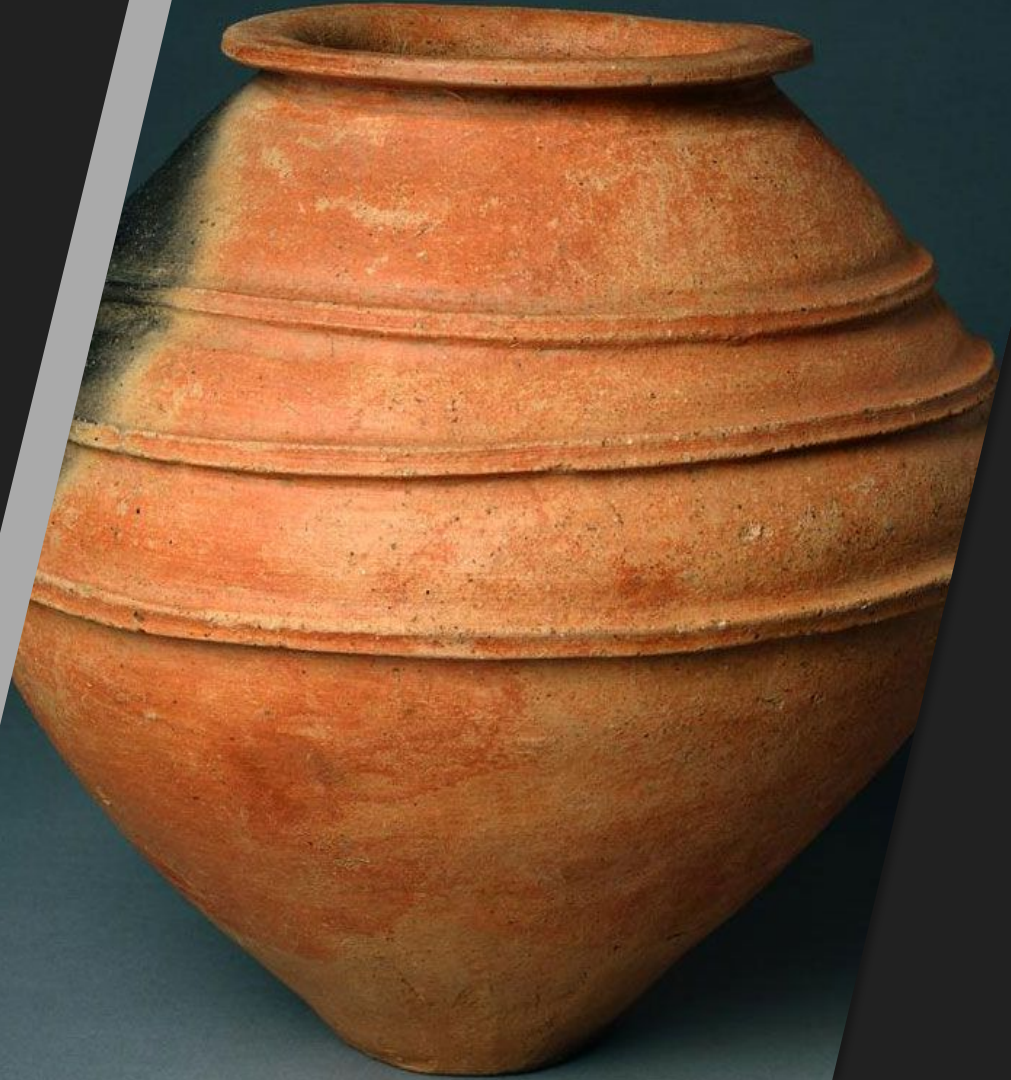
End of the Jomon Period

- Changing climate
- Migrants from Mainland
- Succeeded Yayoi Period
- Jomon Legacy



Yayoi Period Pottery 300 BCE - 300 CE

- Higher Quality Clay
- Reddish Color
- Open Flame Technique
- Functional + Ceremonial



Kofun Period

300 - 710 CE

- Higher Quality Clay
- Introduction of Kilns
- Ceremonial
- Spiritual + Physical



Modern Jomon Inspiration



Valdivia Pottery





history of
japan

Thank You