

# Japanese Art

Cool Japan 215

w/ Dr. Takahashi

GIVE US GOOD GRADE  
please



Melissa Arias, Madeline Hale,  
Jonathan Johnson, Tyrus Torres

# Art 美術

---

The major themes and elements in Japanese art are:

-Nature

-Balance

-Sense of Beauty

-Simplicity

-Materials

# Ceramics *and Tea Ceremony*

- Pottery is an example of Japanese art that depicts, many if not all, the common Japanese themes
- Tea cups design and art development influenced not by foreign influence, but solely Japanese beauty and ideas





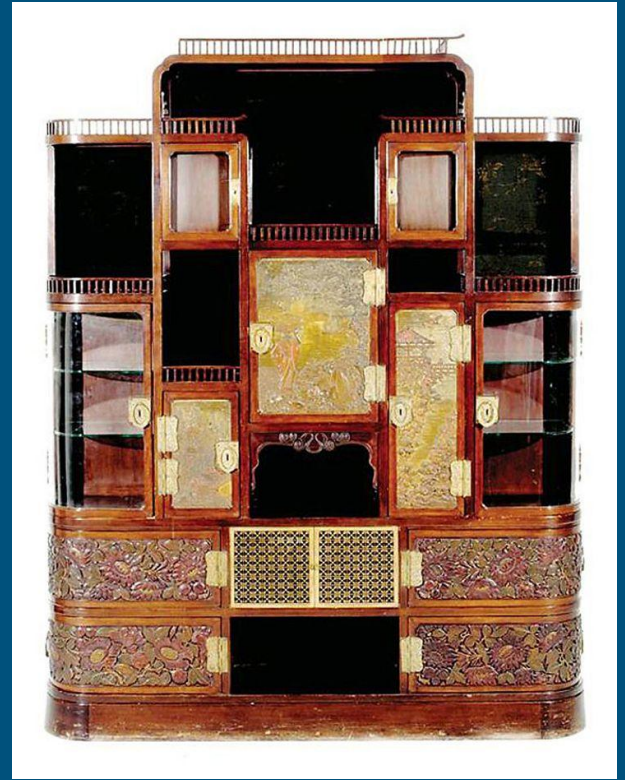
More utensils used in Japanese Tea Ceremony

# Furniture: Japanese meets Western

-Traditional Japanese and western furniture are very different in style and use, each have affected each other at some point

-During Japan Craze the west, the U.S. in particular, really like the “Japanese” look, however the west did not fully understand or absorb





Comparison of traditional Japanese art and western art inspired by Japan

# Modern Japanese Ceramics and Beyond

---

- Traditional Japanese art and modern art seem to meld relatively well, possibly due to overlapping themes and ideas
- Japanese art could be a major factor in modern art style and aesthetic





Japanese modern art and modern design



# Ukiyo-e & Calligraphy 浮世絵 書道

- The Origins of Ukiyo-e
- Contemporary Ukiyo-e
- Origin of Calligraphy
- The Importance of Calligraphy



# Ukiyo-e Origins

- Ogata Korin - Tawaraya Sotatsu
- Rinpa school - Expensive
- Nostalgia of Heian Period



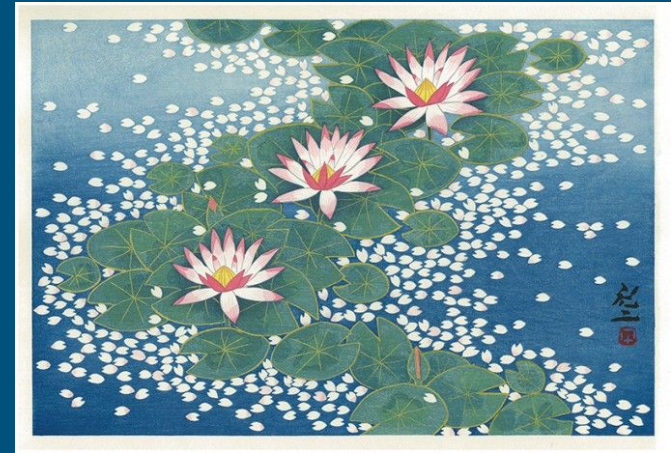
Red and White Plum Blossoms Ogata Korin



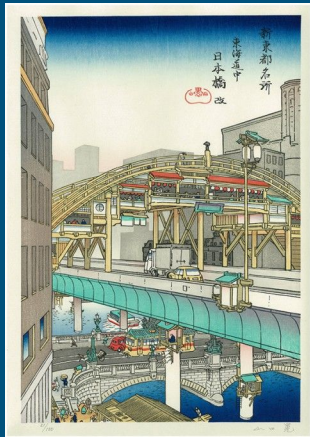
Waves at Matsushima Tawaraya

# Ukiyo-e Today (See notes)

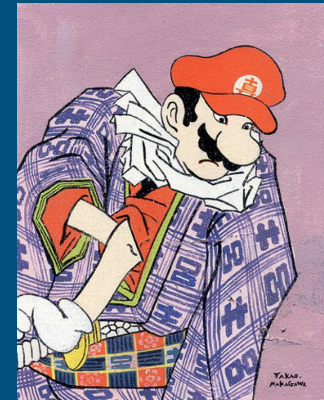
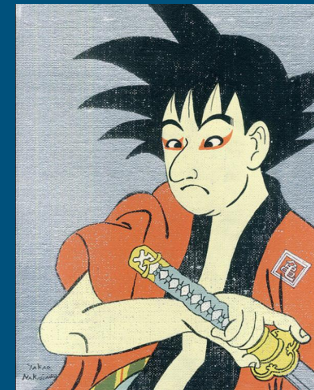
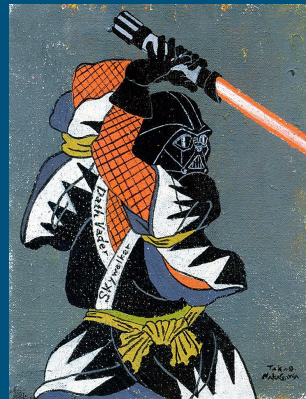
- Reproduction of old Ukiyo-e to preserve culture
- New contents and modern spins of Ukiyo-e
- Ukiyo-e's influence on Japanese Anime Style



Hiramatsu Reiji

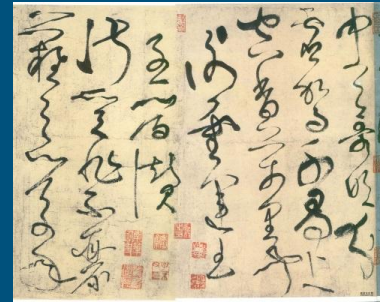
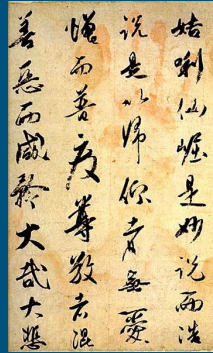


Yamaguchi Akira



# Calligraphy Origins

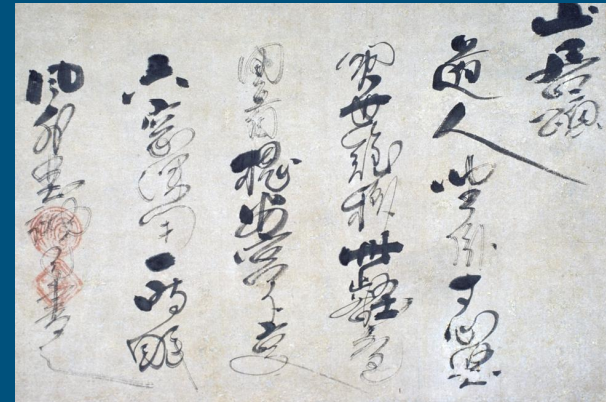
- Japanese adoption of Chinese Writing system (Kanji) in 5th century.
- Buddhist Monk Kukai (early separation from Chinese style)
- Introduction of Hiragana (Japanese originated system) (STARTED BY WOMEN DURING PILLOW BOOKS!!! Pillow books are early women novels, since women weren't allowed to learn kanji, Hiragana was easier than kanji)
- Japanese Writing system today Kanji Katakana and Hiragana



# Importance today

---

- Calligraphy (brush stroke order, thickness, mood)
- Modern Day Calligraphers in Japan
- Over 5000+ Unique Kanji with specific brush strokes



# Fashion 流行

---

Traditional Japanese Fashion

Contemporary Japanese Fashion

Western Influences/Comparisons



# Traditional Japanese Fashion

---

Kimono (Heian Period 794-1192)

Edo Period (1603-1868)

-3 Piece Samurai Uniform

Used until Meiji Era (1868-1912)

Now used only for special days



# Harajuku- “The Heart of Japanese Fashion”

---

Fashion Walks and Trend Setting





# Lolita Fashion

---

## Lolita Cafés



Gothic Lolita



Elegant Lolita



Sweet Lolita

# Mori Kei Fashion

---

Tranquility with Nature

Popular in Spring



# Gyaru/ Gyaru

---

Gyaru- Girly Glam Style

Gyaru- Punk Rock Style



# Kawaii Fashion Culture

---

Cute/Adorable

Cosplay



# Japanese Fashion and Western Fashion

---



# Men's Fashion

---



# Evolution of Performing arts

---

- Kabuki is not the only Japanese performing art!
- Before Kabuki there was; Kagura, Dengaku, Gigaku, Bugaku, Sarugaku, and Sarugaku-no-no (Noh)
- Only introducing, unable to discuss political reason for all... Unless separate 45 min ppt.



# Kagura

---

- Old, like super old (Sub 4th Century CE)
- Early signs of Shinto practices
- Evolved into many sub-genres; Miko kagura, Izumo-ryu kagura, Ise-ryu kagura, Shishi kagura, Daikagura, and many more.





# Dengaku

---

- Used for early crop ritual (Theory)
- Translates to “Field Music”
- Adopted by rich people
- Still a practiced Shinto tradition



# Gigaku

- 7th Century in Japan
- From Korean style
- A large quantity of Masks with specific roles
- Schools to train performers, founded by Mimaji



# Bugaku

---

- Evolved from Gigaku 12th Century
- Adopts from China, India, and Korea
- Originally for Elite Class only
- Elaborate costumes with masks, as well as traditional music



# Sarugaku

---

- Comedic movement 8th century
- Jugglers, acrobats, comedy, and puppets
- Early stepping stone to Noh Plays



# Sarugaku-no-no (Noh)

---

- Stage aesthetics
- 14th century to today
- Dramas based on Japanese literatures like the *Tale of Genji*
- Even had intermission comedy *Kyogen* performances



# Honorable Mentions

- Bunraku, Shinpa, Shingeki, and Modern



# CONCH-clusion

---

- Dishes and Deco
- Assortment of lines + color
- Beautiful fashion
- And DRAMAAAH



No Conches were harmed in the making of this amazing presentation for Japanese 215 Cool Japan Today... Maybe

# References

---

<http://www.vam.ac.uk/content/articles/j/japanese-art-and-design-themes/>

[http://www.metmuseum.org/toah/hd/seim/hd\\_seim.htm](http://www.metmuseum.org/toah/hd/seim/hd_seim.htm)

<http://www.explorejapaneseceramics.com/basic/general/history.html>

[http://www.metmuseum.org/toah/hd/jtea/hd\\_jtea.htm](http://www.metmuseum.org/toah/hd/jtea/hd_jtea.htm)

<http://www.veniceclayartists.com/japanese-contemporary-pottery/>

<http://www.veniceclayartists.com/japanese-contemporary-pottery/>

<http://www.britannica.com/art/Japanese-performing-arts/Meiji-period>

[http://www.seejapan.co.uk/Libraries/Images/kabuki\\_forweb.sflb.ashx](http://www.seejapan.co.uk/Libraries/Images/kabuki_forweb.sflb.ashx)

<https://doyouknowjapan.com/traditionalmusic/>

<http://www.unesco.org/culture/ich/en/11-representative-list-00520&include=slideshow.inc.php&id=00413#http://wa2.www.unesco.org/culture/ich/img/photo/thumb/04767-LRG.jpg;pv580e6c6dc22200bf>

<http://www.japantimes.co.jp/news/2014/10/25/national/treasures-of-the-shoso-in-ward/#.Vy1hfkrLIV>

<https://en.wikipedia.org/wiki/Gigaku>

<https://www.atsutajingu.or.jp/en/fes/index.html>

<https://en.wikipedia.org/wiki/Bugaku>

[http://www.kuniyoshiproject.com/Warrior%20triptychs%201854-1855%20\(T308-T325\).htm](http://www.kuniyoshiproject.com/Warrior%20triptychs%201854-1855%20(T308-T325).htm)

<https://en.wikipedia.org/wiki/Sarugaku>

<http://www.ancient-symbols.com/images/buddhist-symbols/original/conch-shell.jpg> (CONCHSHELL)

<http://www.japan-guide.com/e/e2007.html>

The Influence of Japanese Art on Design

<http://www.nippon.com/en/views/b02306/?pnum=3>